

## Snow Season is Coming!



Snow season is just around the corner, with October bringing the first frost and Halloween usually delivering frigid temperatures. Metro provides snow removal / sanding services in the Village on roadways constructed to the District's standards and conveyed to the District for operation and maintenance. The District's maintenance crews begin plowing when there is an accumulation of 3" of snow (enough snow for the plow blades to move), or when we are notified by Emergency Services that icy conditions exist on the roads.

Due to the equipment involved, timing of the storm, and personnel required to provide effective snow removal, plowing and sanding services must proceed on a priority basis as follows:

### Priority 1

Large, main loop roads (collectors) are plowed and sanded first. These roads include Castle Pines Drive North, Castle Pines Drive South, Country Club Drive, Country Club Parkway, Prospect Drive, etc., with emphasis on the school bus routes.

### Priority 2

Local roads are cleared. These roads carry medium levels of traffic--they're the roads that branch off the collectors.

### Priority 3

Low traffic volume roadways and cul-de-sacs.

**PRIVATE ROADS, "COMMON DRIVE" ROADWAYS, DRIVEWAYS AND SUB-ASSOCIATION ROADS ARE NOT PLOWED/SANDED BY THE DISTRICT.**

Roadways will NOT be plowed if parked vehicles or other obstructions interfere with the safe and continuous operation of the snow removal equipment.

### How Fast Can Metro Get the Roads Plowed?

The time required to clear snow and ice from roads varies depending on the following conditions:

- Snowstorm intensity
- Snowstorm duration
- Temperature
- Traffic conditions
- Time of day

This means that Metro may not be able to plow or sand roads at the same hour each day or on occasion even the same day of the storm. Cleanup and widening operations continue for one or more days after a storm, depending on the storm conditions.

### What if I have an emergency and my street isn't plowed?

If an emergency situation occurs, call 911. Snow plowing equipment will be diverted for emergencies when requested by Castle Pines Emergency Services, the Douglas County Sheriff's Office, or South Metro Fire Rescue.

**Metro District phones are staffed during normal office hours (regardless of conditions) from 8 a.m. to 4:30 p.m., Monday through Friday, excluding holidays. Additional communication mechanisms will be implemented after these hours if needed.**

### Who sweeps the streets after plowing and sanding operations are finished?

Metro contracts this service and schedules street sweeping every other week as weather permits.

### HOW CAN YOU HELP?

**DRIVE CAUTIOUSLY – SLOW DOWN and be patient!** Drivers are responsible to manage their vehicles as road conditions dictate. During a snowstorm, every reasonable effort will be made to keep roadways open. During a major snowstorm, all our operators and snow removal equipment will be on the road. Do not attempt to stop a snowplow or obstruct its path. Storms that arrive during peak travel times (like morning and evening rush hours) subject District drivers to the same travel delays as everyone else when attempting to arrive to provide snow removal services. If you have questions, please contact Metro at 303-688-8330.

## Irrigation Efficiency Analysis Update

Approximately 60% of the residents in the Village have completed an Irrigation Efficiency Analysis. Time is running out to get your Irrigation Efficiency Analysis completed in 2022. Please go to [bit.ly/cpmdwater](https://bit.ly/cpmdwater) to sign up for an analysis. Please feel free to contact our Irrigation Hotline via phone at 303-521-4702 or via email at [CPMDIrrigation@castlepinesmetro.com](mailto:CPMDIrrigation@castlepinesmetro.com) if you have any questions.

## Metro's Community Picnic

The Metro Picnic was a great success, with approximately 415 participants. The residents enjoyed Jazz musical entertainment from Metropolitan Jazz Orchestra. The event was catered by Rocky Mountain Catering, and Ladybird Poppy assembled the pretty flower arrangements for each table. Party Time Rentals and Butler Rents provided all the linens, tables, chairs, stage set up, and the installation of the main tent.



## Water Bonds Update

The District recently closed on \$24.6 million in Water and Wastewater Enterprise Revenue Bonds. The District received a "AA" stable rating from S&P, which is a testament to the District's strong financial health. These bonds will be used to fund several projects that will improve the resiliency of our water system, including upgrades to our Water Treatment Facility, distribution system improvements, and storage tank upgrades. More information will be coming out soon about these exciting projects.



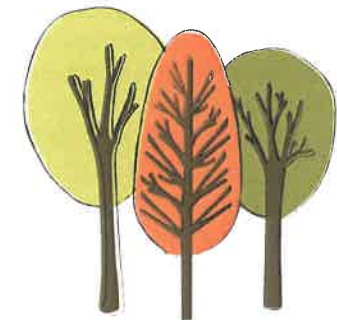
## Spread the word about CPMD's critical water & billing updates



Please encourage your neighbors to share their contact information with CPMD to stay informed about important water and billing info from the District. They can do so here: <https://bit.ly/CPMDContactList>

## Irrigation Season at an End

From mid-September to mid-October, Metro's staff members will be turning off and winterizing the irrigation systems managed by the District. It is time to contact your landscape service provider to do the same for your household. By the middle of October, irrigation systems need to be turned off, drained, and protected from the coming winter weather. Any outside watering needed through late fall and early winter should be completed with a hose and hand-held sprinkler.



## Castle Pines Metropolitan District

5880 Country Club Drive, Castle Rock, CO 80108  
303-688-8330

email: [Info@castlepinesmetro.com](mailto:Info@castlepinesmetro.com)

[www.castlepinesmetro.com](http://www.castlepinesmetro.com)

Hours: Monday - Friday, 8 am to 4:30 pm

Josh Shackelford - *District Manager*

Sue Mantz - *Asst. District Manager*

Jason LeTellier - *Operations Superintendent*

Hank Cohan - *Field Manager / Safety Coordinator*

LeAnna Gonzales - *Staff Accountant*

### BOARD OF DIRECTORS

Rick Huser, *Chairman*

Kim Dadlani, *Treasurer*

Tad Walden, *Secretary*

Mike Lanam, *Director*

David King, *Director*

The Metro Board of Directors meets on the fourth Tuesday of the month at 9:30 am at the Metro District office. Meetings are open to the public. Please call to confirm date and time.

At this time, the community will be connected through a Zoom link, which can be found on the District website, <https://www.castlepinesmetro.com/meetings-events/board-meetings/>

- October 25, 2022, 9:30 am